



**Abrasion Test**

**Test Conditions:** 245 U/min  
1.5 kg silica  
0.94 kg water  
1000 revolutions per test  
10 kg test weight

**Title:** Laser applied hardfacing  
MPH191 (powder GTV 10.97.6S)  
Supplier: Nubile s.r.l. Italy  
**Ref. No.:** 20190331  
**Date:** 26.04.2019

**Rubber Wheel:** System D ( 70 Sh A)  
**Sample-substrat material:** unknown  
**inserts:**

**By:** B. Lengacker  
**cc:** JPG, CSCH

**Test Results**

sample #	Initial Weight (g)	pre-test		1st test run		2nd test run		remarks
		Result. Weight (g)	weight loss (g)	Result. Weight (g)	weight loss (g)	Result. Weight (g)	weight loss (g)	
	277,427	277,382	0,045	277,363	0,019	277,338	0,025	
	284,546	284,504	0,042	284,478	0,026	284,457	0,021	
	280,398	280,355	0,043	280,326	0,029	280,309	0,017	

**Average Values**

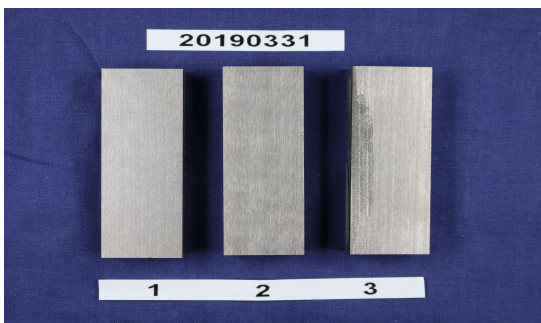
sample #	pre-test		1st test run		2nd test run		remarks
	weight loss (g)	weight loss (g)	weight loss (g)	weight loss (g)	weight loss (g)	weight loss (g)	
		0,043		0,025		0,021	

**Results** ( average of single values of the first test run)

sample #	weight loss (g)	STD ± (g)	remarks
	0,0247	0,0051	

*Note: The alumina was changed after every tested sample ( after 3 runs).*

Samples before test



Samples after test

